



INTERCONTINENTAL
NEW YORK TIMES SQUARE

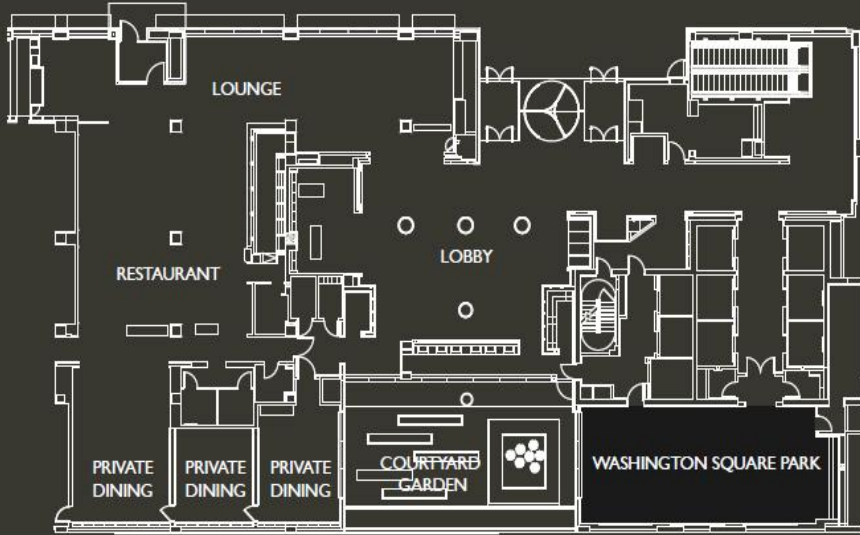
Name of Room	Theater	Classroom	Banquet	Reception	Boardroom	U-Shape	Area sq. m.	Dimensions	Height	Floor
Gotham I	160	60	150	166	32	34	151	14m x 10.7m	4.4m	Ballroom
Gotham II	90	30	60	87	36	33	77	14m x 5.5m	4.4m	Ballroom
Gotham III	170	60	150	166	48	60	378	14m x 10.7m	4.4m	Ballroom
Gotham Ballroom	450	279	300	450	48	60	37	14m x 27m	4.4m	Ballroom
Gramercy Park	20	9	20	36	12		51	5m x 7.3m	2.8m	Ballroom
Bryant Park	30	12	30	51	18	15	48	5.8m x 8.8m	2.8m	Ballroom
Hudson River Park	30	12	20	44	18		113	5.8m x 8.2m	2.8m	Ballroom
Central Park I	48	24	30	69	20	22	43	16.1m x 7m	3.8m	Ballroom
Central Park II	32	18	20	43	12	14	113	6.7m x 6.4m	3.8m	Ballroom
Central Park Ballroom	100	48	70	112	42	46	132	16.1m x 7m	3.8m	Ballroom
Union Square Park	90	69	60	119	36	40	51	8.8m x 15m	4.1m	Ballroom
Madison Square Park	30	21	20	49	12	15	43	7m x 7.3m	2.8m	Ballroom
Riverside Park Foyer							462	6.7m x 6.4m	4.4m	Ballroom
Riverside Park	45	21	40	66	20	22	720	6m x 11m	2.7m	Ballroom
Washington Square Park	104	51	80	137	42	46	1680	9.1m x 17m	3.3m	Ground
Boardroom					12		572	7.9m x 6.7m	2.4m	Mezzanine



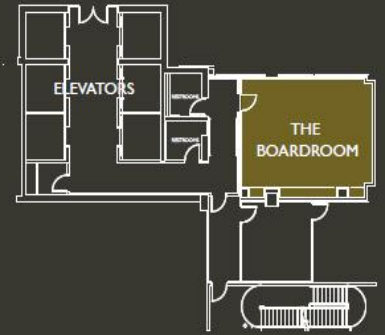
INTERCONTINENTAL[®]

NEW YORK TIMES SQUARE

GROUND



MEZZANINE



BALLROOM

